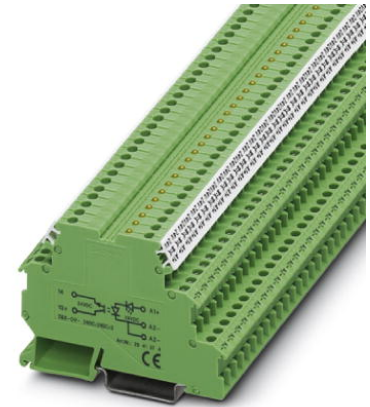


DEK-OV- 12DC/24DC/3

Order No.: 2941387

The illustration shows the version DEK-OV- 24DC/24DC/3



<http://eshop.phoenixcontact.de/phoenix/treeViewClick.do?UID=2941387>

Power optocoupler terminal block, input: 12 V DC, output: 3-30 V DC/3 A, terminal width 6.2 mm

Commercial data	
EAN	4017918080402
Pack	10 Pcs.
Customs tariff	85364190
Weight/Piece	0.0252 KG
Catalog page information	Page 105 (IF-2007)

Product notes

WEEE/RoHS-compliant since:
10/17/2006



<http://www.download.phoenixcontact.com>
Please note that the data given here has been taken from the online catalog. For comprehensive information and data, please refer to the user documentation. The General Terms and Conditions of Use apply to Internet downloads.

Technical data

Input data	
Nominal input voltage U_N	12 V DC
Input voltage range in reference to U_N	0.8 ... 1.2
Switching threshold "0" signal in reference to U_N	≤ 0.4
Switching threshold "1" signal in reference to U_N	≥ 0.8

Typical input current at U_N	8.5 mA
Typical response time	40 μ s
Typical turn-off time	200 μ s
Operating voltage display	Yellow LED
Name of protection	Polarity protection
Transmission frequency	300 Hz
Nominal input voltage U_N	12 V DC
Input voltage range in reference to U_N	0.8 ... 1.2
Switching threshold "0" signal in reference to U_N	≤ 0.4
Switching threshold "1" signal in reference to U_N	≥ 0.8
Typical input current at U_N	8.5 mA
Typical response time	40 μ s
Typical turn-off time	200 μ s
Operating voltage display	Yellow LED
Name of protection	Polarity protection
Transmission frequency	300 Hz

Connection data

Type of connection	Screw connection
Stripping length	8 mm
Screw thread	M 3
Conductor cross section solid min.	0.2 mm ²
Conductor cross section solid max.	2.5 mm ²
Conductor cross section stranded min.	0.2 mm ²
Conductor cross section stranded max.	2.5 mm ²
Conductor cross section AWG/kcmil min.	24
Conductor cross section AWG/kcmil max	14

General data

Length	80 mm
Width	6.2 mm
Height	56 mm
Test voltage input/output	2.5 kV AC
Ambient temperature (operation)	-20 °C ... 60 °C
Ambient temperature (storage/transport)	-20 °C ... 70 °C
Mounting position	Any

Assembly instructions	In rows with zero spacing
Operating mode	100% operating factor
Standards/regulations	IEC 60664
	IEC 60664 A
	DIN VDE 0110
Pollution degree	2
Surge voltage category	III

Certificates / Approvals

Approval logo



requested approbations

Certification	GOST
---------------	------

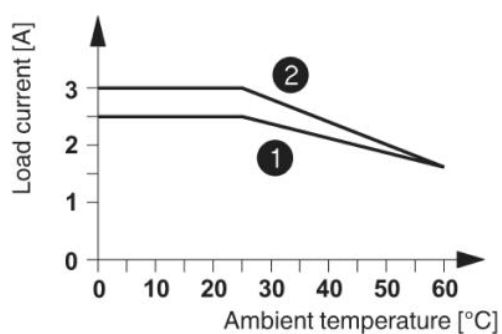
Accessories

Item	Designation	Description
Bridges		
2716648	EB 2- DIK BU	Insertion bridge, for middle and bottom level, 2-pos., color of the insulating material: blue
2716693	EB 2- DIK RD	Insertion bridge, for middle and bottom level, 2-pos., color of the insulating material: red
2716651	EB 3- DIK BU	Insertion bridge, for middle and bottom level, 3-pos., color of the insulating material: blue
2716745	EB 3- DIK RD	Insertion bridge, for middle and bottom level, 3-pos., color of the insulating material: red
2716664	EB 4- DIK BU	Insertion bridge, for middle and bottom level, 4-pos., color of the insulating material: blue
2716758	EB 4- DIK RD	Insertion bridge, for middle and bottom level, 4-pos., color of the insulating material: red
2716677	EB 5- DIK BU	Insertion bridge, for middle and bottom level, 5-pos., color of the insulating material: blue
2716761	EB 5- DIK RD	Insertion bridge, for middle and bottom level, 5-pos., color of the insulating material: red
2716680	EB 10- DIK BU	Insertion bridge, for middle and bottom level, 10-pos., color of the insulating material: blue

2716774	EB 10- DIK RD	Insertion bridge, for middle and bottom level, 10-pos., color of the insulating material: red
2715940	EB 80- DIK BU	Insertion bridge, divisible, for middle and bottom level, 80-pos., insulating material: Blue
2715953	EB 80- DIK RD	Insertion bridge, divisible, for middle and bottom level, 80-pos., insulating material: Red
2715788	EB 80- DIK WH	Insertion bridge, divisible, for middle and bottom level, 80-pos., insulating material: White

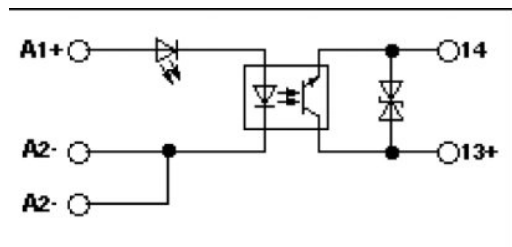
Drawings

Diagram



- ① Horizontal mounting
- ② Vertical mounting

Circuit diagram



Address

PHOENIX CONTACT Inc., USA
586 Fulling Mill Road
Middletown, PA 17057, USA
Phone (800) 888-7388
Fax (717) 944-1625
<http://www.phoenixcon.com>



© 2008 Phoenix Contact
Technical modifications reserved;